


Adjustable ranges

Pressure range code	Adjustable range [bar]		Max. operating pressure [bar]	Proof pressure [bar]	The resulting hysteresis is approx. ... bar at the end of range	
	Increasing pressure	Decreasing pressure				
Overpressure						
2SS	0.005...0.11	0.001...0.11	0.13 / 0.15	0.2	0.004	0.006
3SS	0.012 ...0.2	0.002 ...0.196	0.47 / 0.5	0.7	0.005	0.010
18SS	0.050 ...1.2	0.030 ...1.20	2.7 / 3.0	4.0	0.018	0.040
80SS	0.300 ...5.5	0.030 ...5.30	7.1 / 8.0	10.7	0.110	0.240
150SS	0.500 ...10.3	0.100 ...9.90	13.3 / 15.0	20.0	0.190	0.420
Vacuum						
3SS	-0.006 ...-0.2	-0.002 ...-0.196	0.13 / 0.15	0.2	0.004	0.009
18SS	-0.040 ...-1.0	-0.002 ...-0.970	0.67 / 0.5	1.0	0.030	0.060

Electrical Ratings

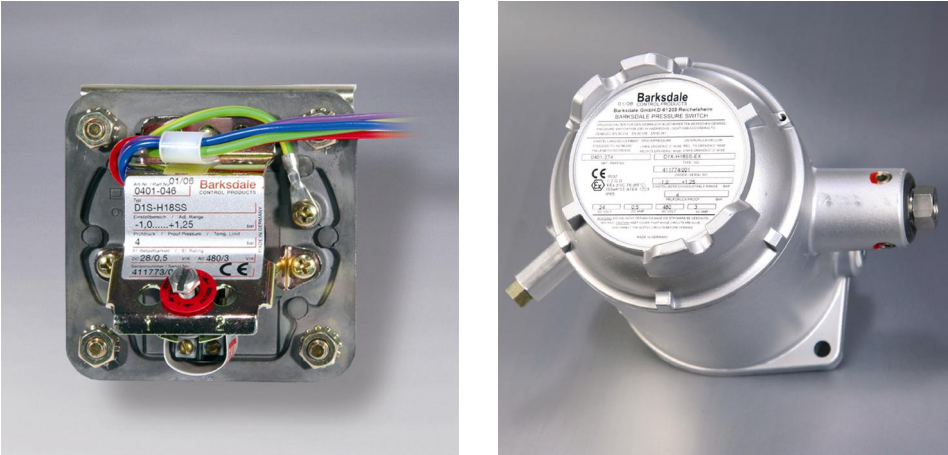
Micro switch	Special Characteristics	Volt AC 50/60 Hz	Ind. Load A	Res. Load A	Volt DC	Ind. Load A	Res. Load A	Notes
H	Microswitch with silver contacts	125 250 480	10 10 3	10 10 3	6 to 24	0,50	0,5	Small hysteresis; high AC / low DC loads
M	Microswitch with silver contacts	125 250 480	10 10 3	10 10 3	12 24 250	5,00 1,00 0,25	15,0 2,0 0,4	Medium hysteresis; high AC and DC loads
GH	Microswitch with gold plated contacts for low voltage and low current	125	1	1	24	1,00	1,00	low change-back values

 **IMPORTANT**

We recommend to use a prefuse of the maximum current rating from the table above according to the load switched.


We recommend gold plated contacts for all intrinsically safe and other applications with low voltage/power.

Operating Instructions
Single/Dual Metal Diaphragm Pressure Switches Type D1S/D2S and D1X/D2X



1	Intended Applications	2
2	Safety Instructions.....	2
3	Standards.....	3
4	Warranty/Guaranty.....	3
5	Installation/Commissioning.....	4
6	Maintenance/Cleaning.....	8
7	Technical Data.....	9


Art. no.: 923-0166
Index R, 31.01.2024



Specifications are subject to changes without notice!

Intended Applications

The pressure switches are specifically applied for monitoring and controlling of operations using maximum and minimum pressures. A micro switch triggers an electrical signal when minimum or maximum pressure are reached.

 **DANGER**

The switch may only be used in the specified fields of application (see type label).

The temperature has to be within the specified ranges, the pressure values and the electrical rating must not exceed the values specified.

Observe also the applicable national safety instructions for assembly, commissioning and operation of the switch.

The switch is not designed to be used as the only safety relevant element in pressurized systems according to DGR 97/23/EC.

Without special provisions/actions, pressure switches must not be used for combustible gas or pure hydrogen applications.

Safety Instructions

The safety instructions are intended to protect the user from dangerous situations and/or material damage.

In the operating instructions the seriousness of the potential risk is designated by the following signal words:

 **DANGER**


Refers to imminent danger to men.

Nonobservance may result in fatal injuries.

 **WARNING**


Refers to a recognizable danger.

Nonobservance may result in fatal injuries, and destroy the equipment or plant parts.


 **CAUTION**

Refers to a danger.

Nonobservance may result in light injuries and material damage to the equipment and/or to the plant.

 **IMPORTANT**

Refers to important information essential to the user.

 **Disposal**

The equipment must be disposed of correctly in accordance with the local regulations for electric/electronic equipment.

The equipment must not be disposed of with the household garbage!

Standards

The standards applied during development, manufacture and configuration are listed in the CE conformity and manufacturer's declaration.

Warranty/Guaranty

Warranty

Our scope of delivery and services is governed by the legal warranties and warranty periods.

Terms of guaranty

We guaranty for function and material of the single- / dual- pressure switch under normal operating and maintenance conditions in accordance with the statutory provisions.


Loss of guaranty

The agreed guaranty period will expire in case of:

- changes or modifications to the switch/housing/fitting
- incorrect use,
- incorrect installation or
- incorrect handling or operation contrary to the provisions of these operating instructions.

No liability is assumed for any damage resulting therefrom, or any consequential damage.


Installation/Commissioning

**DANGER**


Only install or uninstall the switch when deenergized (electrically and hydraulically/pneumatically).

Pressure connection and electrical connection must be carried out by trained or instructed personnel according to state-of-the-art standards.

The switch must only be installed in systems where the maximum pressure P_{max} is not exceeded (see type label).

**CAUTION**

Alternating pressure - vacuum applications are not authorized in switch types which are suitable for both vacuum and pressure applications.

**WARNING**

Pressure peaks and pressure shocks exceeding the maximum operating pressure are inadmissible.


The maximum operating pressure is the upper final value of the adjustable range or, if specified, the pressure indicated as maximum operating pressure. Exceeding the max. operating pressure affects the performance and the life span of the product and may damage it.

Pressure switches must be mounted vibrationless.

**WARNING**

Check the switch regularly for functioning.

If the switch does not work properly, stop operation immediately!

**IMPORTANT**

All pressure switches are tested for proper functioning before they leave the factory. The factory proof pressures are stated on the type label.

Contact Protection

The micro switches used are normally suitable for both direct and alternating current operation. Inductive, capacitive and lamp loads may, however, considerably reduce the life expectancy of a micro switch and, under extreme circumstances, even damage the contacts.

Depending on the application spark suppression and current limiting is recommended (see succeeding figures).

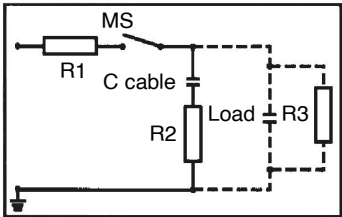


Fig. 1: Protection in case of capacitive loads
R1: Protection against starting current rushes
R2,R3: Protection against high discharge currents

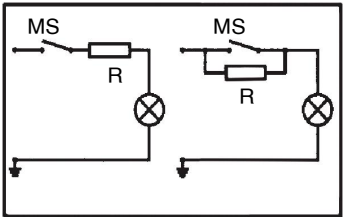


Fig. 2: Lamp load provided with resistance in parallel or series connection to switch of condensators

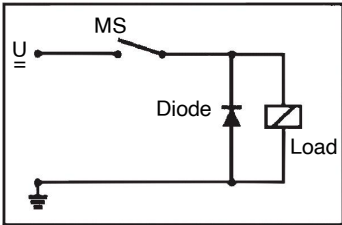


Fig. 3: Protection in case of continuous current and inductive load by recovery diode

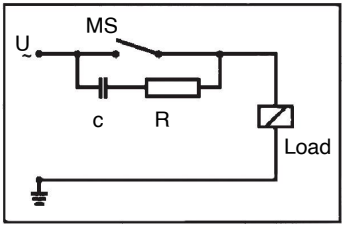



Fig. 4: Protection in case of alternating current and inductive load by RC-link

**IMPORTANT**


Comply with the torque values provided in the pipeline construction.

It is recommended that the electrical connections are made in accordance with the relevant standards.

Tightening torques for locking screw of the housing (which are delivered):

1/2" NPT	4 Nm
3/4" NPT	6 Nm

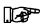
Set point adjustment

 **IMPORTANT**

Factory-Provided: pressure (temperature) switch point setting
We confirm for pressure (temperature) switches that have been factory set the setting will be detailed on the label name plate.


Warranty is not applicable for any changes that may occur due to transportation or installation.
For critical applications we recommend the setting is checked and re-set if necessary after installation and wiring of the pressure (temperature) switch.

In pressure switches, a displacement of the pressure sensing element occurs with a change in pressure. Following the displacement of the pressure sensing element operates a microswitch.
Upon delivery of the product, the set points are likely to be found in the middle of the adjustable range. On request, fix set points may be adjusted by our factory. In this event, the point will be indicated on the type plate or any separate plate, i = increasing, d = decreasing.
The set point is adjusted by turning the adjustment screw.


 **IMPORTANT**

To reach the adjustment screw for pressure switches with housing, remove the cover (see Fig. 8).


Allow pressure switch to reach the desired switch pressure.
Turn adjustment screw clockwise or counterclockwise to actuate the micro switch.

 **IMPORTANT**

In case of overpressure:	+ ↻ -	Counterclockwise rotation:	set point increasing
		Clockwise rotation:	set point decreasing
In case of vacuum:	- ↻ +	Counterclockwise rotation:	set point decreasing
		Clockwise rotation:	set point increasing

 **IMPORTANT**

Please consult the wiring diagram for the contact status at atmospheric pressure (see Fig. 5).

 **IMPORTANT**


Particularly important for small pressures!
Set point adjustment must be performed in installation position.

Precise adjustment of set point to actuate on increasing pressure

Lower system pressure to 0 bar.
Increase pressure slowly and check if micro switch is actuated at desired switch pressure.
If necessary, readjust by turning the adjustment screw
Repeat preceding steps until microswitch operates at desired switch pressure.

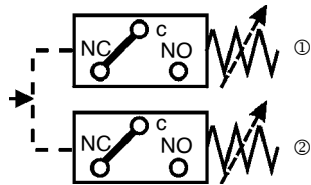
Precise adjustment of set point to actuate on decreasing pressure

Increase pressure up to a point clearly above the desired switch pressure (at least, switch pressure plus max. hysteresis; not above max. operating pressure).
Lower pressure slowly and check if micro switch is actuated at desired switch pressure.
If necessary, readjust by turning the adjustment screw
Repeat preceding steps until microswitch operates at desired switch pressure.
Following the adjustment of all set points, each set point must be checked and, if necessary, be readjusted.

 **IMPORTANT**

The adjustment of several set points occurs for each set point as specified above.

Wiring Code for all Types (Contact status at atm. pressure)



at vacuum NC/NO vice versa

Fig. 5: Wiring Code

Power circuit ①	Power circuit ②
C = purple	C = brown
NC = blue	NC = orange
NO = red	NO = black

Use in Hazardous Locations

The pressure switch type D1X/D2X is designed and approved for the protection class "intrinsic safety i" and "explosion-proof enclosure d". The pressure switch type D1S/D2S has none of the approvals stated above.

The intrinsically safe switches marked as **Ex ia** must be operated with a certified switch amplifier (see Fig. 6).

DX switches with explosion proof enclosures are designed and certified to be used according to UL, CSA and ATEX regulations. Design conditions, approval data and instructions must be observed carefully.

The wiring between switch and **Ex i** isolation amplifier must meet the local safety requirements.

The customer must provide for a highly conductive connection between switch and grounding.

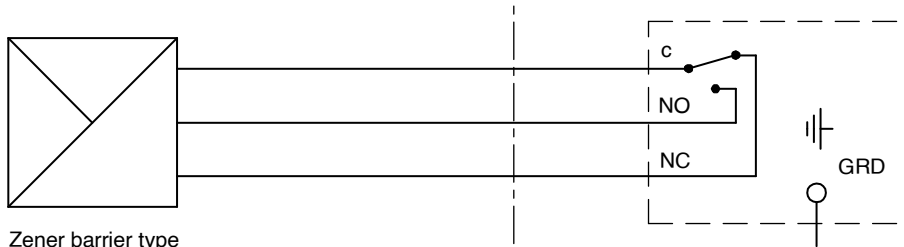


WARNING

With option Ex i: The models having light-alloy (aluminium) enclosures or enclosure parts must be protected against all impact or friction which can ignite the explosive atmosphere.

Unprotected area

Ex ia area



Zener barrier type
Switch amplifier NAMUR

Fig. 6: Operation of pressure switches in intrinsically safe areas

Maintenance/Cleaning

Maintenance

The pressure switch is maintenance free. Checking the set points lies within the discretion of the user. The usual preventive maintenance work in accordance with the PED and ATEX guidelines must always be carried out.

Small setpoint drifts may occur during the initial use of the switch (run-in period). To minimize the setpoint drift we can perform a run-in (ageing) process in our works on request. Larger or continuing setpoints drifts during the normal use of the switch may indicate that the measuring system is not used correctly within the specified limits, exceeding the design criteria or is worn-out. This might lead to metal fatigue of the measuring system and it therefore should be replaced before an ultimate rupture of the metal diaphragm might take place. Please consult your supplier or Barksdale directly for guidelines

Technical Data

See data sheet

Dimensions in mm (inch)

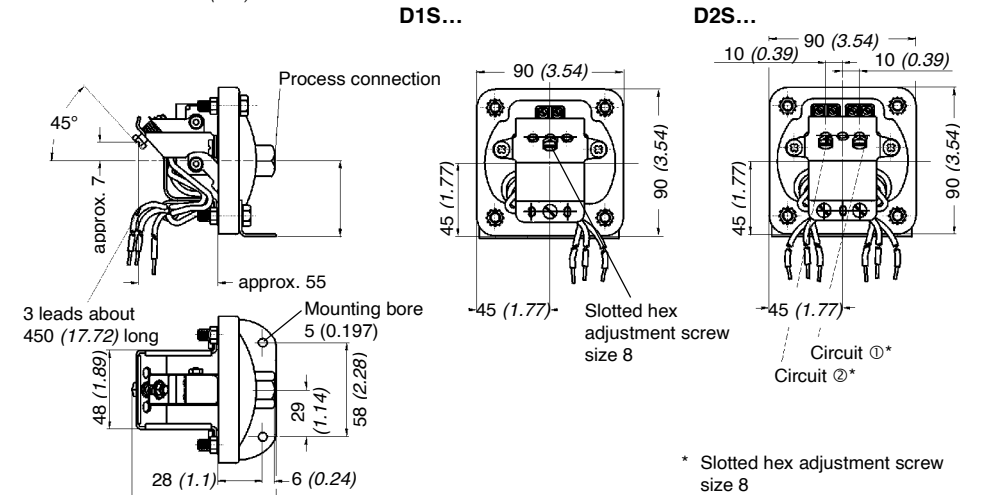


Fig. 7: Metal diaphragm pressure switch type D1S .../D2S ...

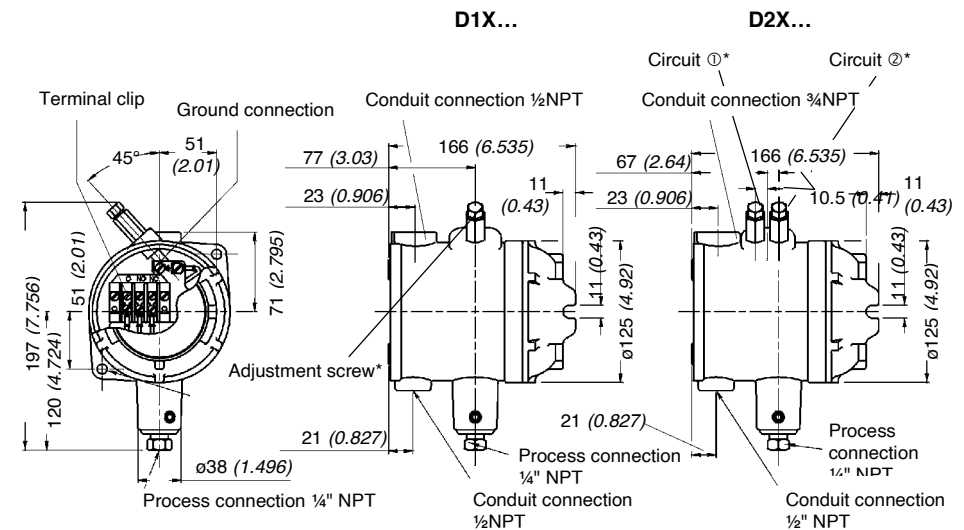



Fig. 8: Metal diaphragm differential pressure switch type D1X .../D2X ...

Approval data for Ex i switches (D1X/D2X)

Approval:	 II 1 G II 1 D	Ex ia IIC T6 Ga Ex ia IIIC T ₂₀₀ 100°C Da
Certificate no.:	TÜV 22 ATEX 322922 X, IECEx TUN 22.0011X	
Permissible ambient temperature:	-40 °C ≤ T _a ≤ +75 °C	
Electrical data for intrinsically safe application:	U _i = 28 V P _i = 0,84 W	I _i = 50 mA C _i , Li, negligibly small
Standards applied:	EN IEC 60079-0:2018/AC:2020-02, EN 60079-11:2012, IEC 60079-0:2017, IEC 60079-11:2011	



CAUTION

Special conditions for use:


1. The size of the nameplate exceeds the permissible area and can therefore be electrostatically charged:
For IIC Ga uses the pressure switches have to be installed and used in such a way, that electrostatic charging from operation, maintenance and cleaning is excluded.
For the use in explosive dust atmospheres process-related electrostatic charges, e.g. due to passing media have to be excluded.
2. All metallic parts of the devices have to be included in the local potential equalization.
3. The intrinsically safe circuit of the device is connected to the earth potential, therefore potential equalization has to exist in the entire area of the installation of the intrinsically safe circuit.
4. The housings of the devices consist of more than 10% aluminum, therefore in EPL Ga applications the installation has to be carried out in such a way, that ignition hazard due to impact or friction can be excluded.



CAUTION

No inadmissible heating can be expected that affect the maximum surface temperature. The maximum surface temperature lies only a small amount above the permissible ambient temperature during operation.

Approval data for Ex d switches (D1X/D2X)

Approval:	 II 2 G II 2 D	Ex db IIC T6 Gb Ex tb IIIC T80°C Db IP66
Certificate no.:	ISSeP08ATEX024X/3	
Permissible ambient temperature:	-40 °C ≤ T _a ≤ +75 °C	
Standards applied:	EN 60079-0:2012+A11:2013 EN 60079-1 : 2014 EN 60079-31 : 2014	

Operating life time

Normal expected service life (expressed in the number of cycles over the full adjustment range) is appr. 1 million for the pressure switch. This may be extended to 2.5 million cycles max. if only a part of the adjustment range is used (about 20%).

Switch sensor life may also be effected negatively by:

- Media not compatible with the wetted materials.
- Too high switch cycling speed or more than 20 cycles per minute.
- System cycling pressure exceeding the top of the adjustable range.

The proof pressure must never be exceeded, otherwise the switch may be damaged. Careful selection of the pressure range can have a positive effect on the service life of the switch.



Hitma Instrumentatie
www.hitma-instrumentatie.nl
info@hitma-instrumentatie.nl
+31 (0)297 - 514 833

België / Belgique
www.hitma-instrumentatie.be
info@hitma-instrumentatie.be
+32 (0)2 - 387 28 64